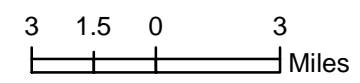
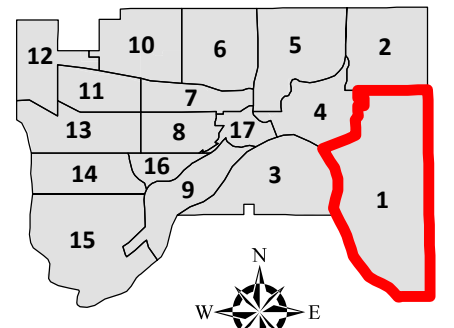


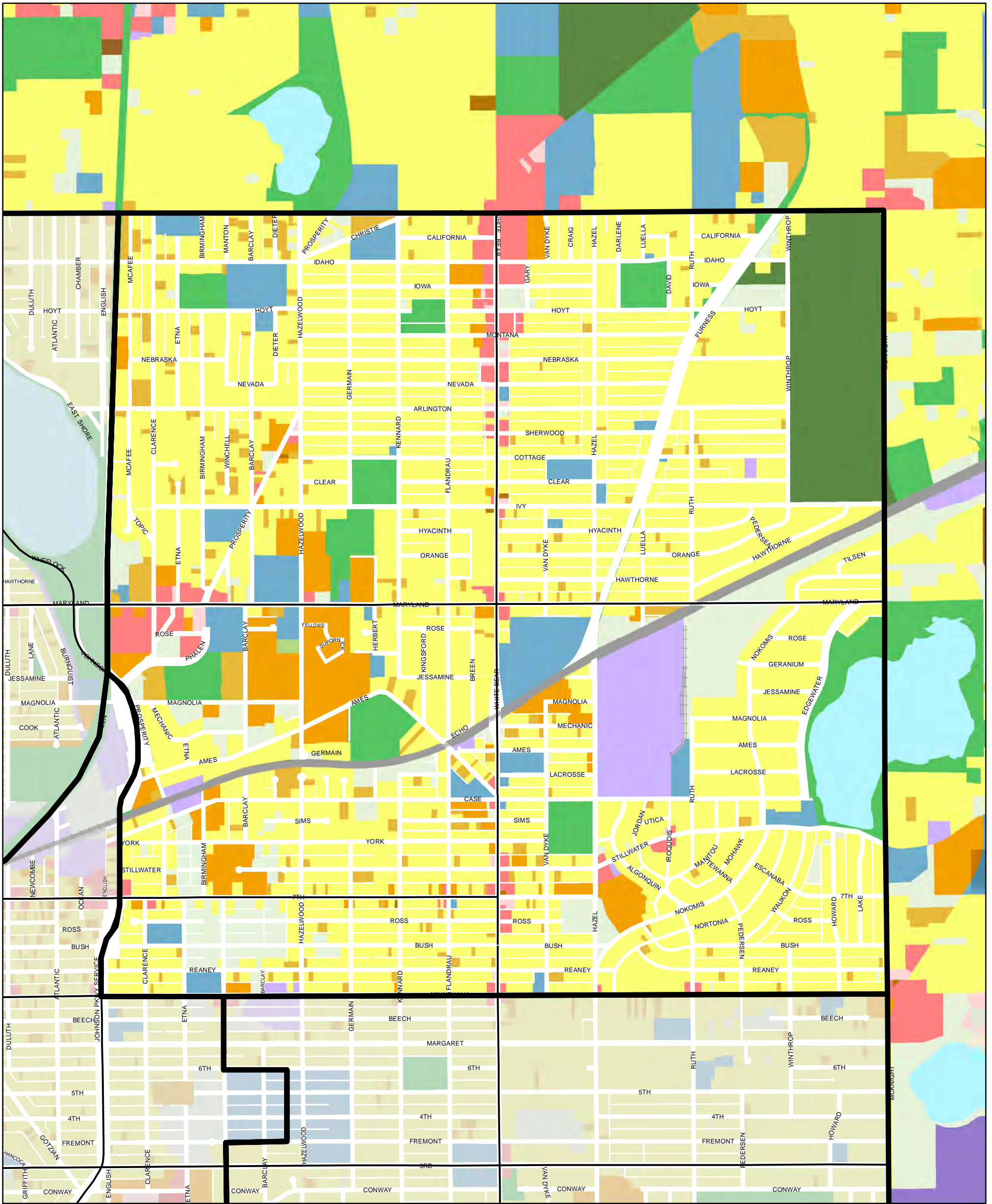
SAINT PAUL LAND USE BY PLANNING DISTRICT (2010)

Eastview-Conway-Battle Creek-Highwood Hills

- | | | |
|-----------------------------|--------------------------------|---------------|
| Farmstead | Mixed Use Residential | Major Highway |
| Seasonal/Vacation | Mixed Use Industrial | Railway |
| Single Family Detached | Mixed Use Commercial and Other | Airport |
| Manufactured Housing Park | Industrial and Utility | Agricultural |
| Single Family Attached | Extractive | Undeveloped |
| Multifamily | Institutional | Water |
| Retail and Other Commercial | Park, Recreational or Preserve | |
| Office | Golf Course | |



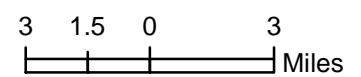
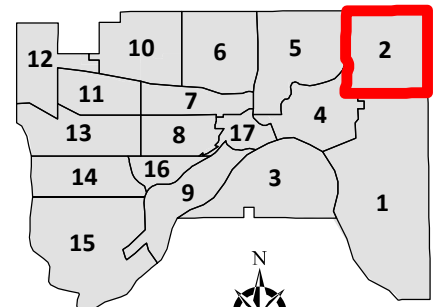
LAST UPDATED: 12/18/2013



SAINT PAUL LAND USE BY PLANNING DISTRICT (2010)

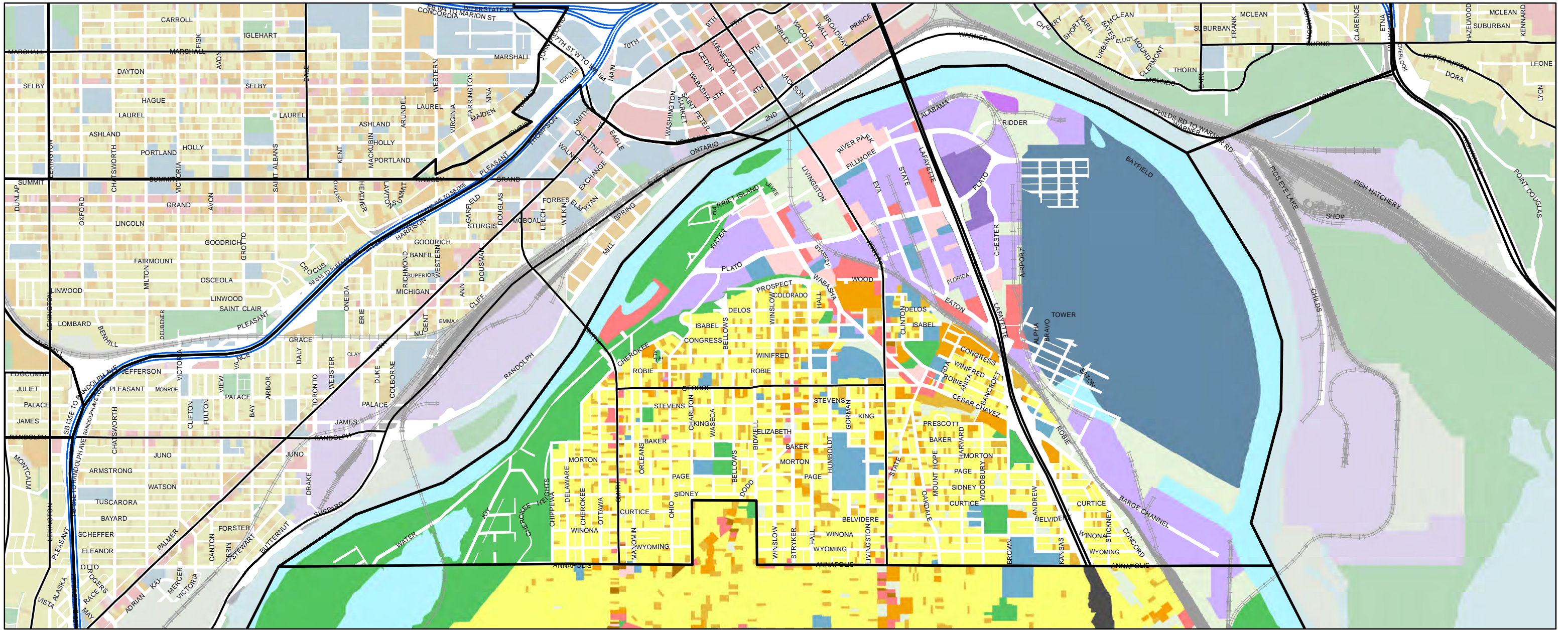
The Greater East Side

- | | | |
|-----------------------------|--------------------------------|---------------|
| Farmstead | Mixed Use Residential | Major Highway |
| Seasonal/Vacation | Mixed Use Industrial | Railway |
| Single Family Detached | Mixed Use Commercial and Other | Airport |
| Manufactured Housing Park | Industrial and Utility | Agricultural |
| Single Family Attached | Extractive | Undeveloped |
| Multifamily | Institutional | Water |
| Retail and Other Commercial | Park, Recreational or Preserve | |
| Office | Golf Course | |



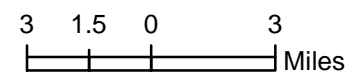
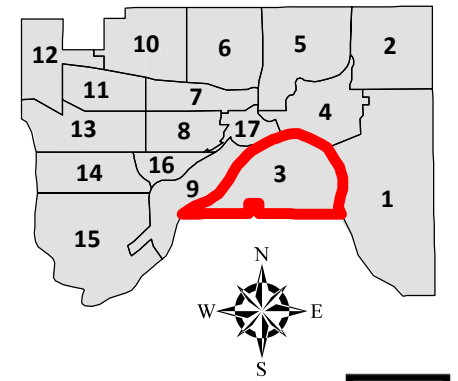
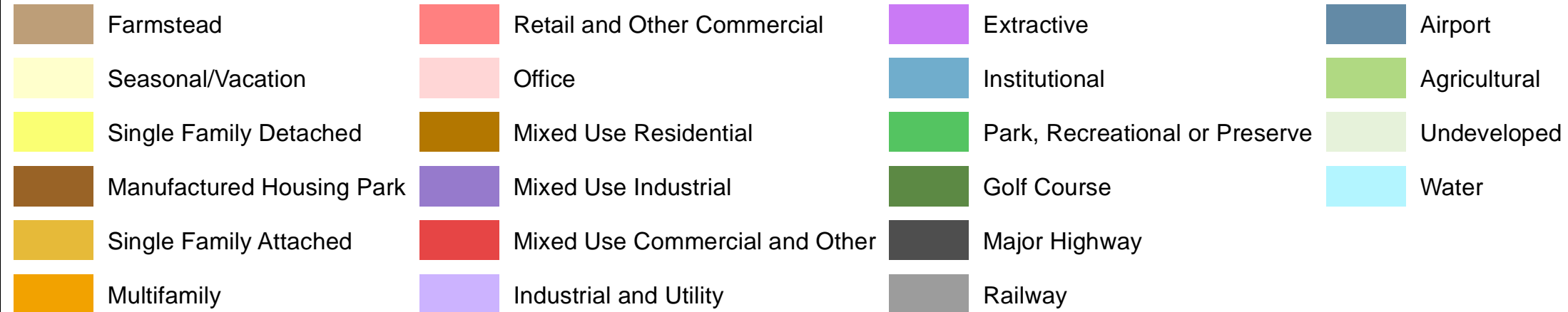
LAST UPDATED: 12/18/2013





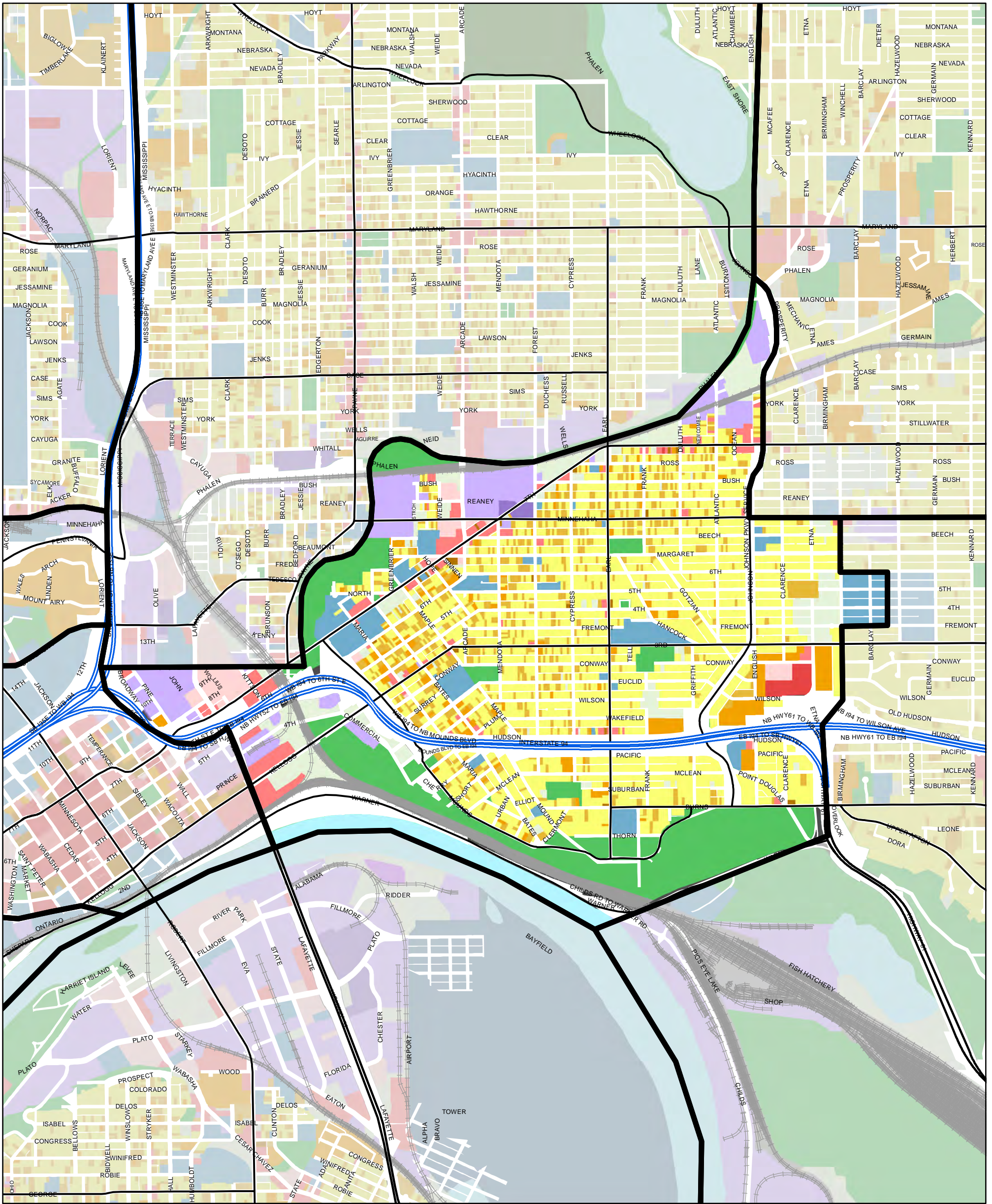
SAINT PAUL LAND USE BY PLANNING DISTRICT (2010)

West Side Community Organization



LAST UPDATED: 12/18/2013

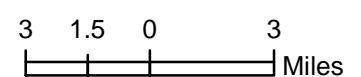
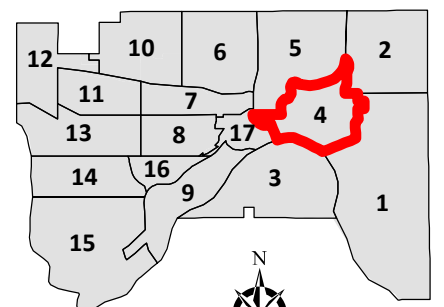




SAINT PAUL LAND USE BY PLANNING DISTRICT (2010)

Dayton's Bluff

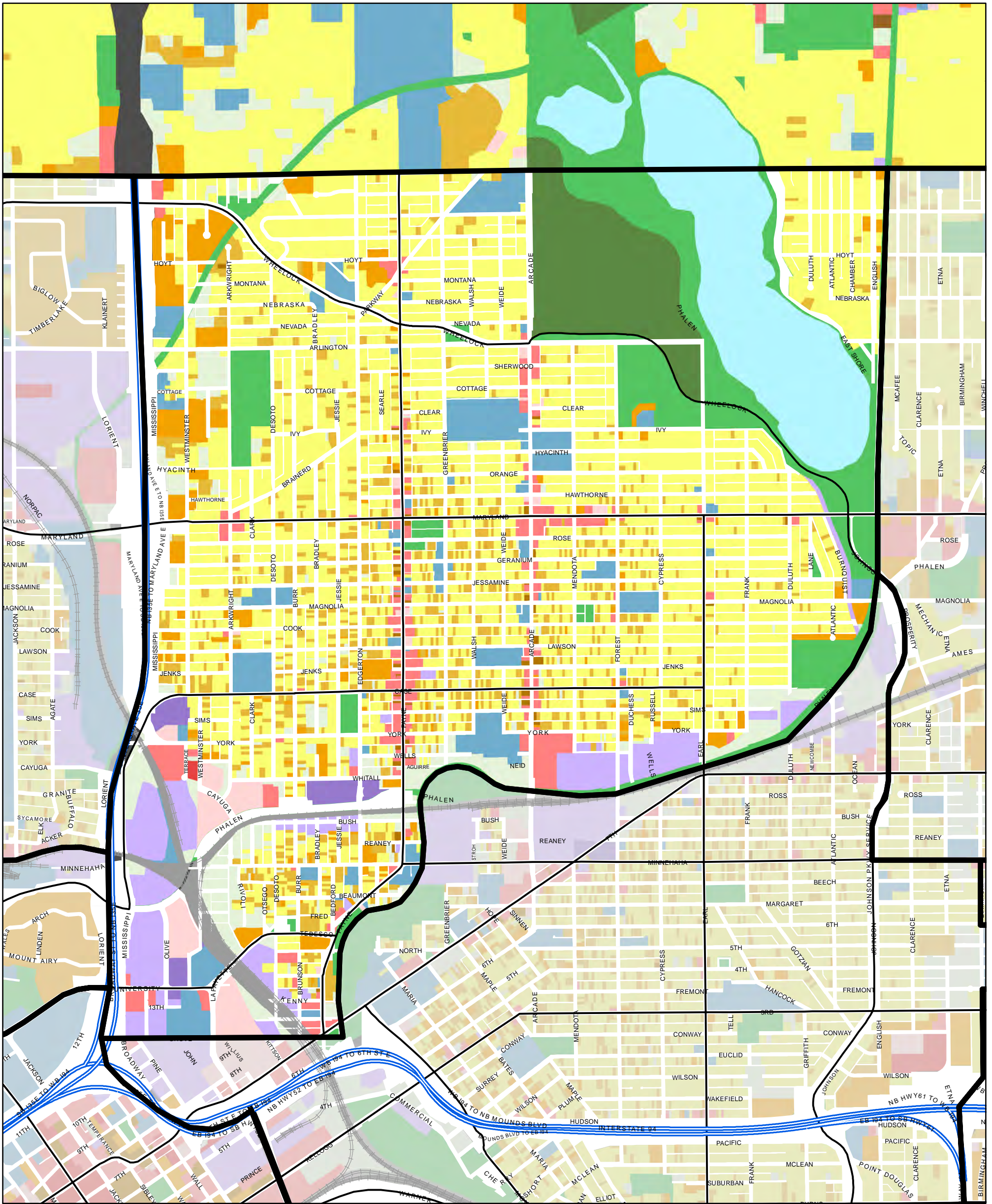
- | | | |
|--|--|---|
|  Farmstead |  Mixed Use Residential |  Major Highway |
|  Seasonal/Vacation |  Mixed Use Industrial |  Railway |
|  Single Family Detached |  Mixed Use Commercial and Other |  Airport |
|  Manufactured Housing Park |  Industrial and Utility |  Agricultural |
|  Single Family Attached |  Extractive |  Undeveloped |
|  Multifamily |  Institutional |  Water |
|  Retail and Other Commercial |  Park, Recreational or Preserve | |
|  Office |  Golf Course | |



LAST UPDATED: 12/18/2013



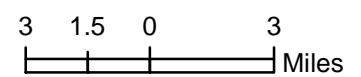
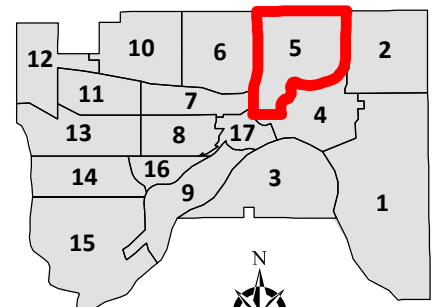
The Most Livable City in America



SAINT PAUL LAND USE BY PLANNING DISTRICT (2010)

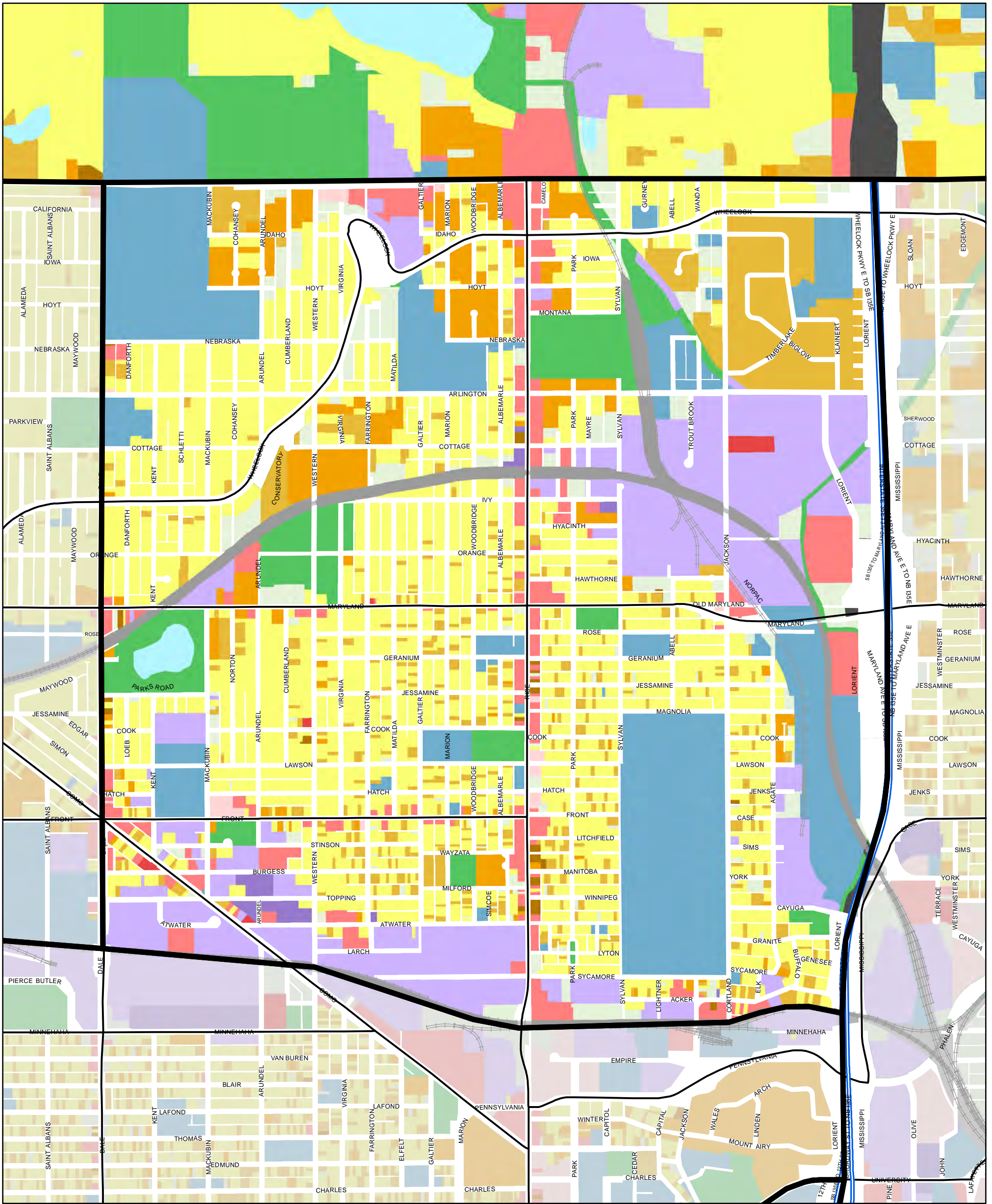
Payne-Phalen

- | | | |
|-----------------------------|--------------------------------|---------------|
| Farmstead | Mixed Use Residential | Major Highway |
| Seasonal/Vacation | Mixed Use Industrial | Railway |
| Single Family Detached | Mixed Use Commercial and Other | Airport |
| Manufactured Housing Park | Industrial and Utility | Agricultural |
| Single Family Attached | Extractive | Undeveloped |
| Multifamily | Institutional | Water |
| Retail and Other Commercial | Park, Recreational or Preserve | |
| Office | Golf Course | |



LAST UPDATED: 12/18/2013

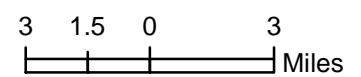
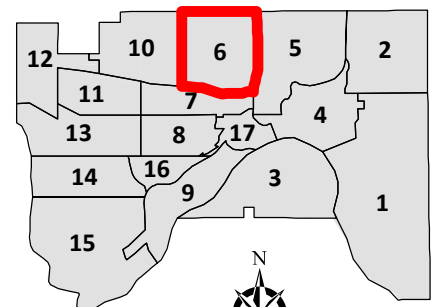




SAINT PAUL LAND USE BY PLANNING DISTRICT (2010)

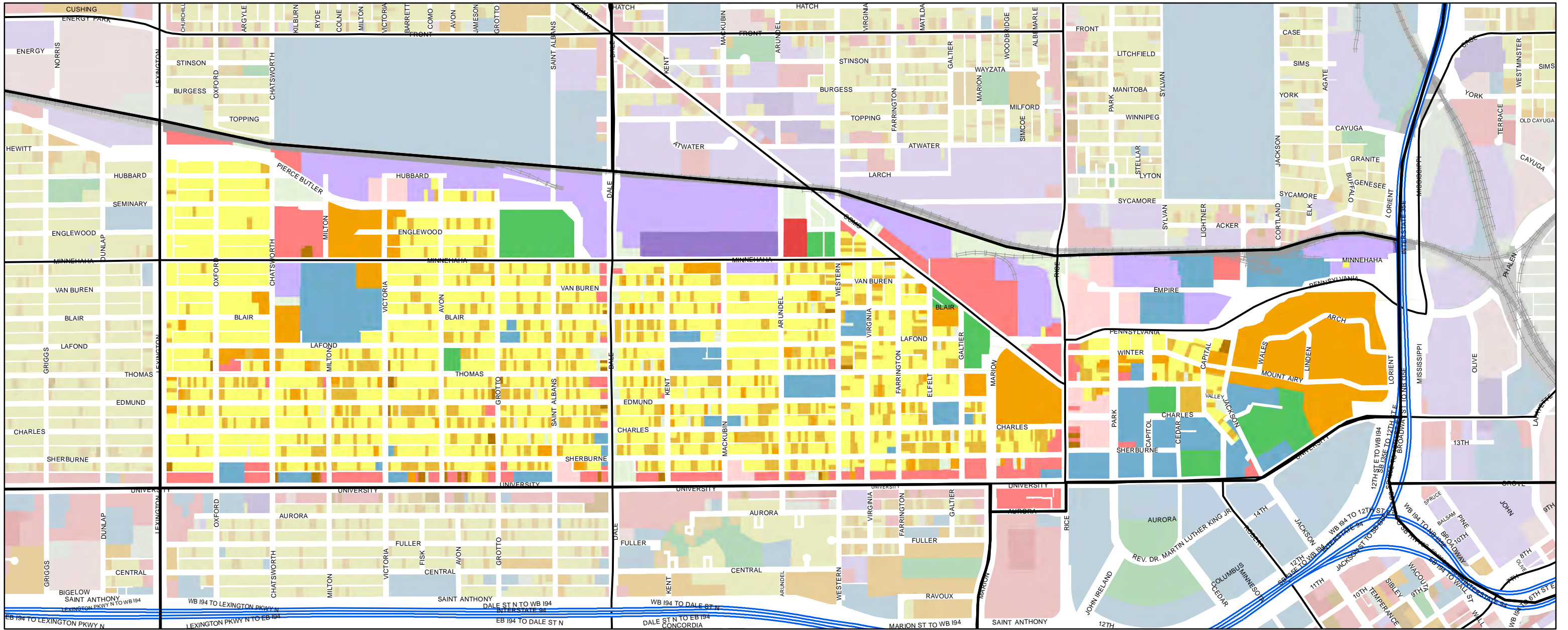
North End

- | | | |
|-----------------------------|--------------------------------|---------------|
| Farmstead | Mixed Use Residential | Major Highway |
| Seasonal/Vacation | Mixed Use Industrial | Railway |
| Single Family Detached | Mixed Use Commercial and Other | Airport |
| Manufactured Housing Park | Industrial and Utility | Agricultural |
| Single Family Attached | Extractive | Undeveloped |
| Multifamily | Institutional | Water |
| Retail and Other Commercial | Park, Recreational or Preserve | |
| Office | Golf Course | |



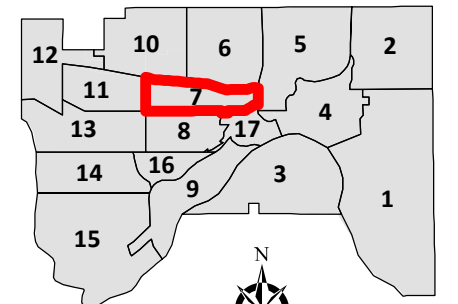
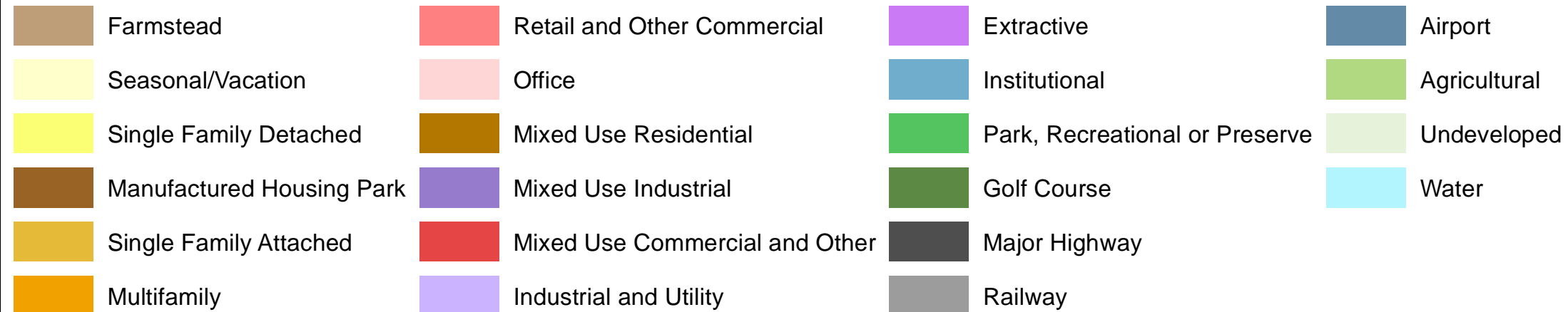
LAST UPDATED: 12/18/2013



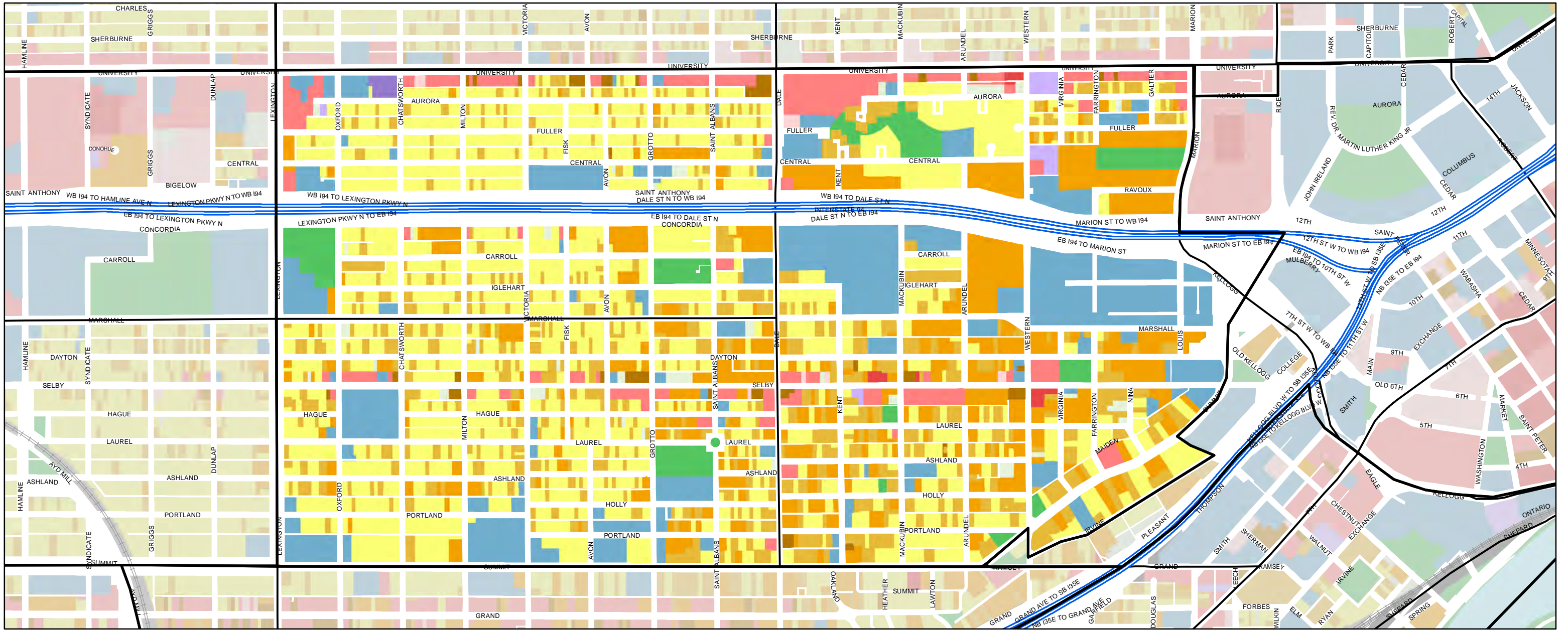


SAINT PAUL LAND USE BY PLANNING DISTRICT (2010)

Thomas-Dale/Frog town

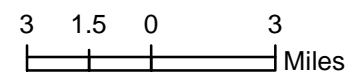
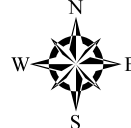
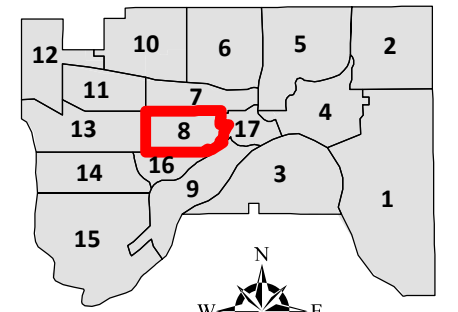
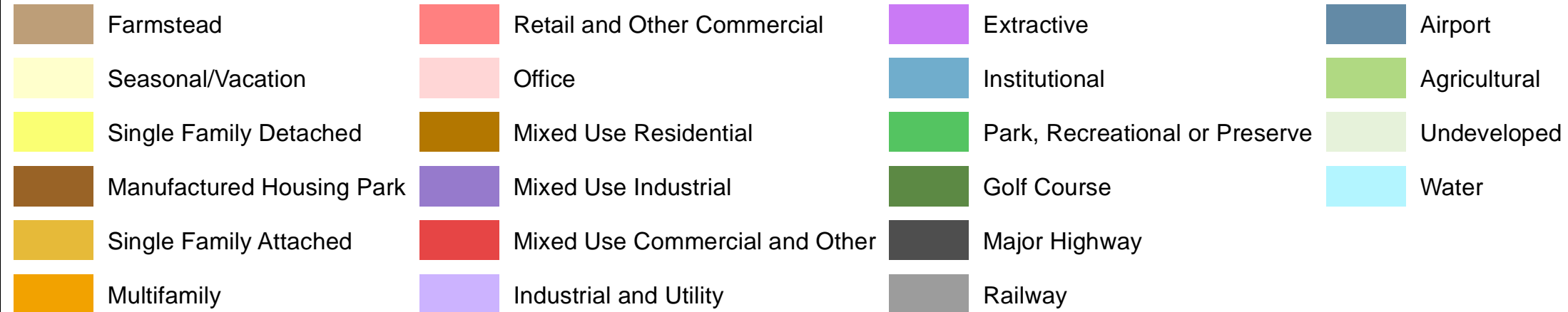


LAST UPDATED: 12/18/2013



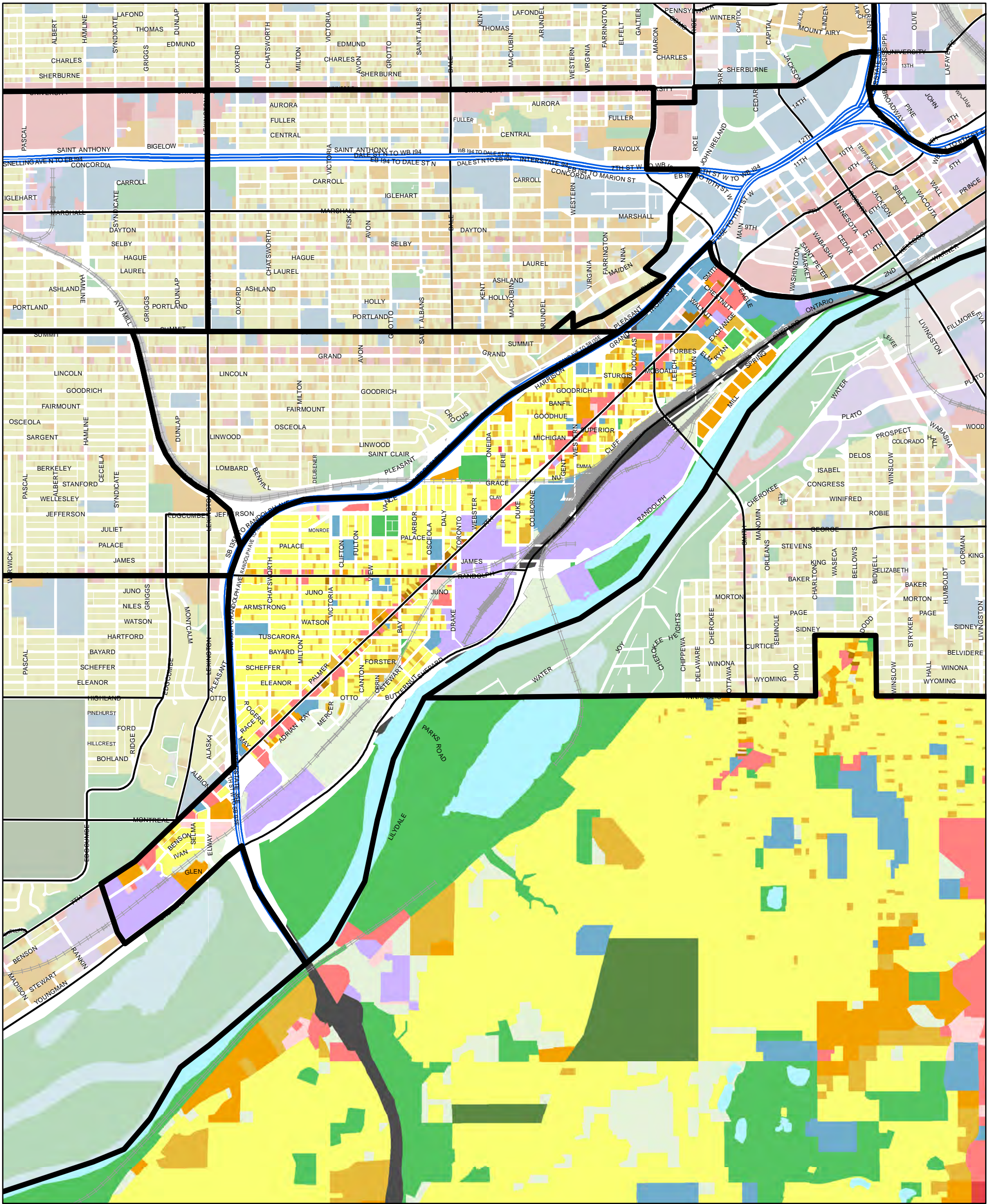
SAINT PAUL LAND USE BY PLANNING DISTRICT (2010)

Summit-University



LAST UPDATED: 12/18/2013

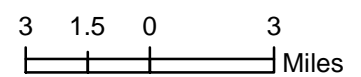
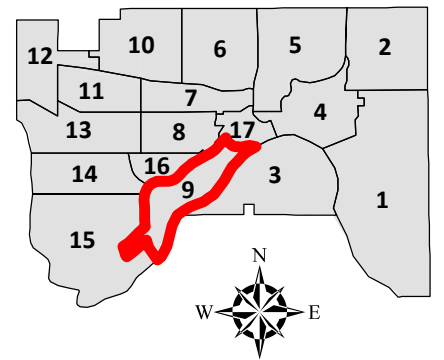




SAINT PAUL LAND USE BY PLANNING DISTRICT (2010)

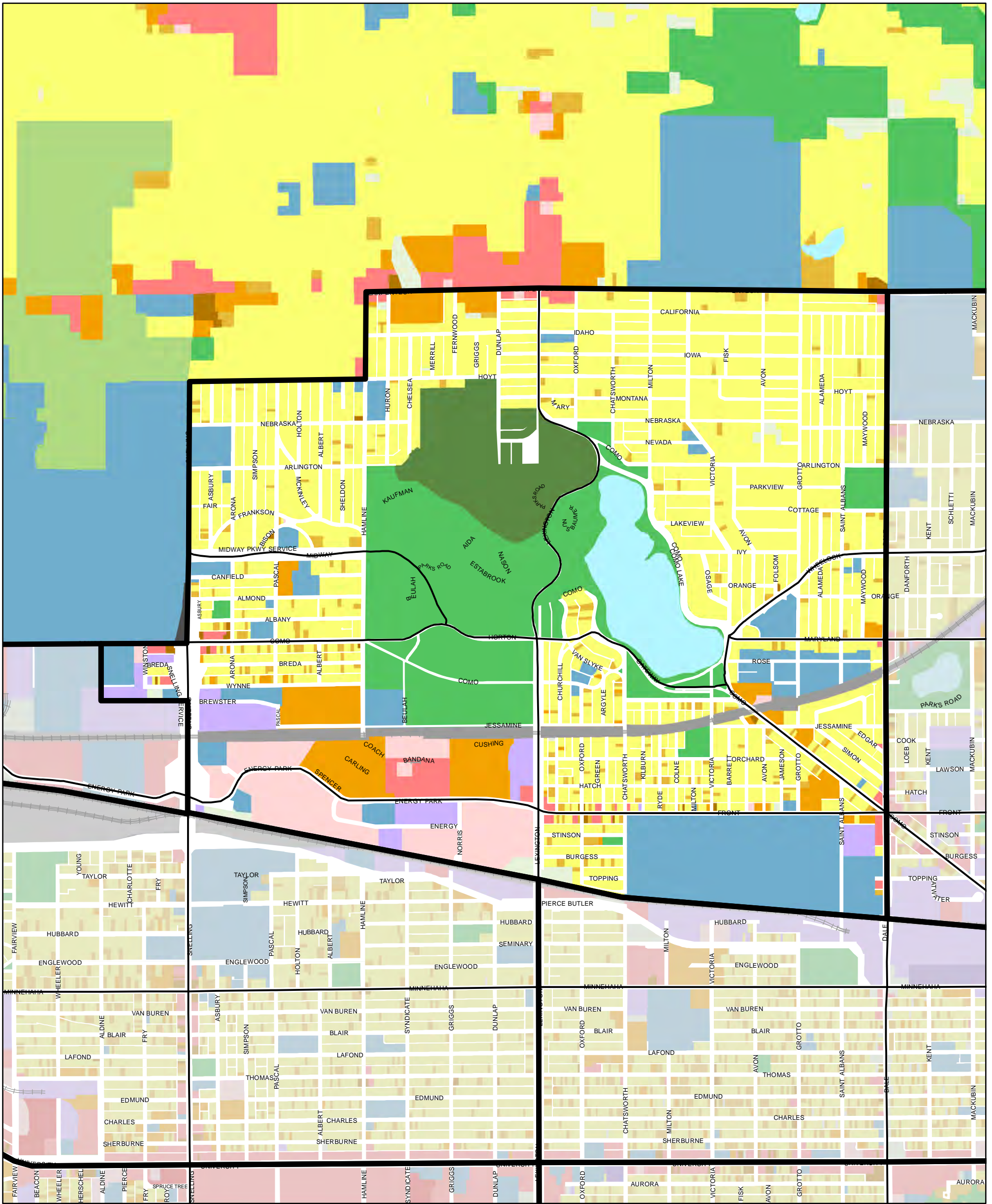
Fort Road/West Seventh Federation

- | | | |
|-----------------------------|--------------------------------|---------------|
| Farmstead | Mixed Use Residential | Major Highway |
| Seasonal/Vacation | Mixed Use Commercial and Other | Railway |
| Single Family Detached | Industrial and Utility | Airport |
| Manufactured Housing Park | Extractive | Agricultural |
| Single Family Attached | Institutional | Undeveloped |
| Multifamily | Park, Recreational or Preserve | Water |
| Retail and Other Commercial | Golf Course | |
| Office | | |



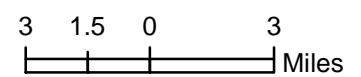
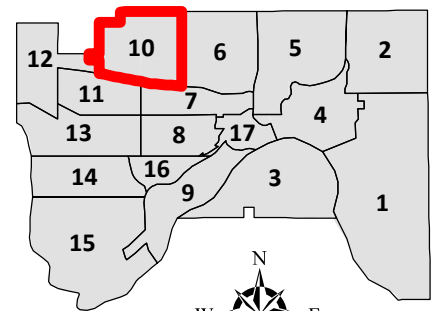
LAST UPDATED: 12/18/2013





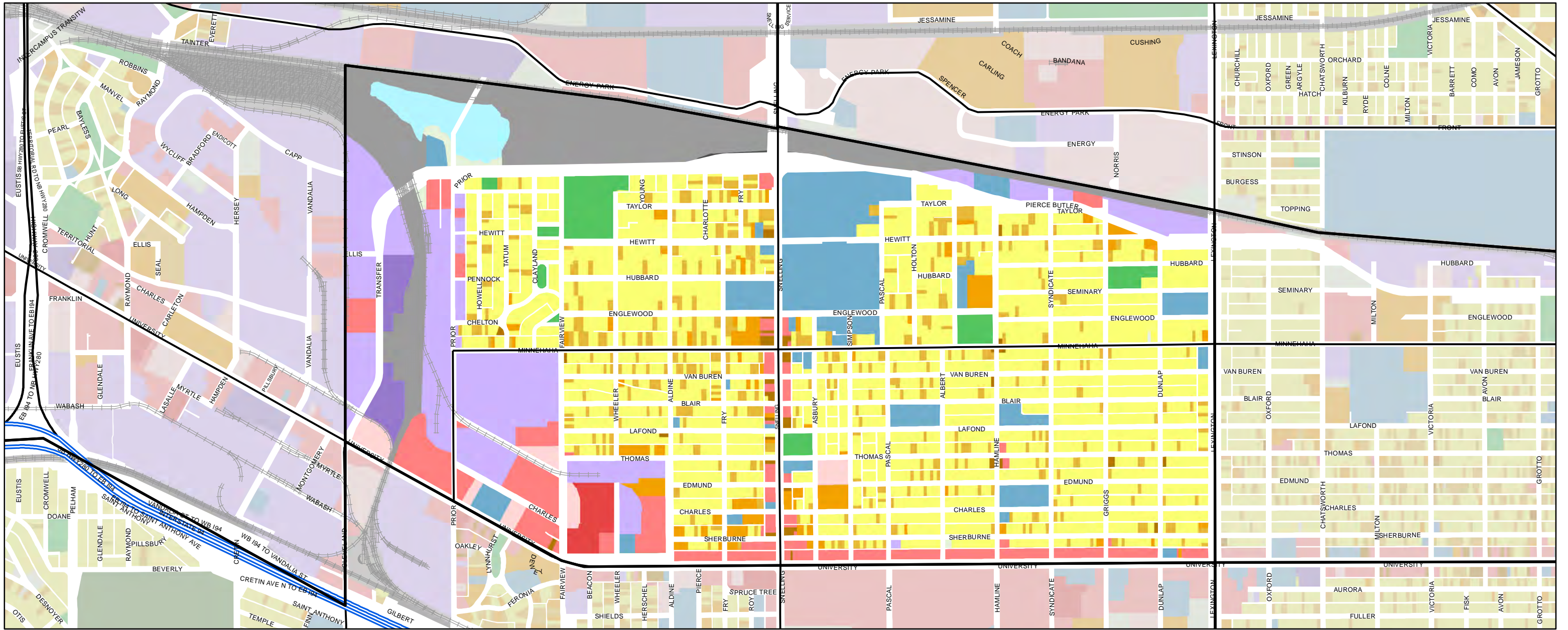
SAINT PAUL LAND USE BY PLANNING DISTRICT (2010)

Como



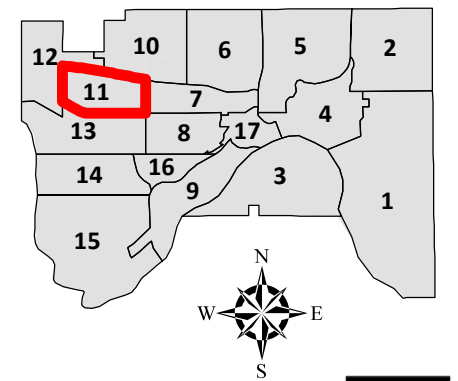
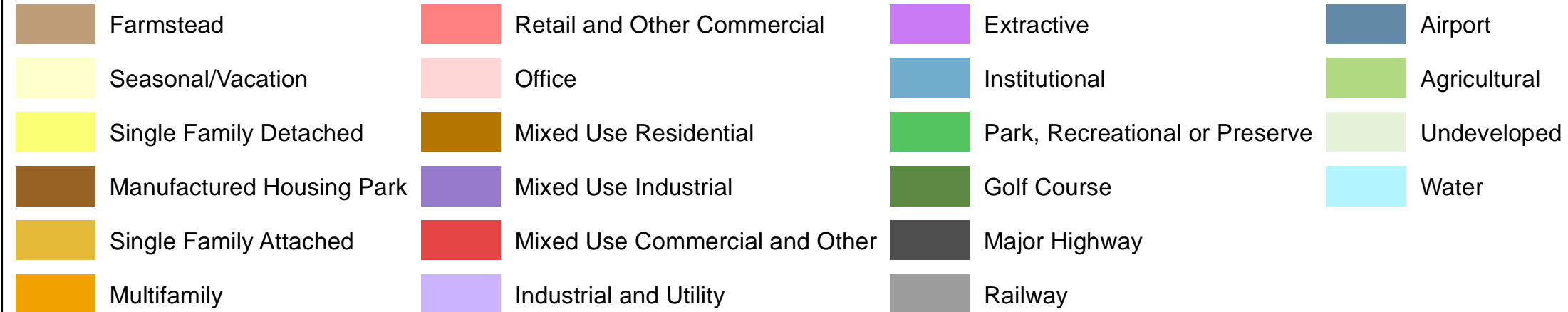
LAST UPDATED: 12/18/2013





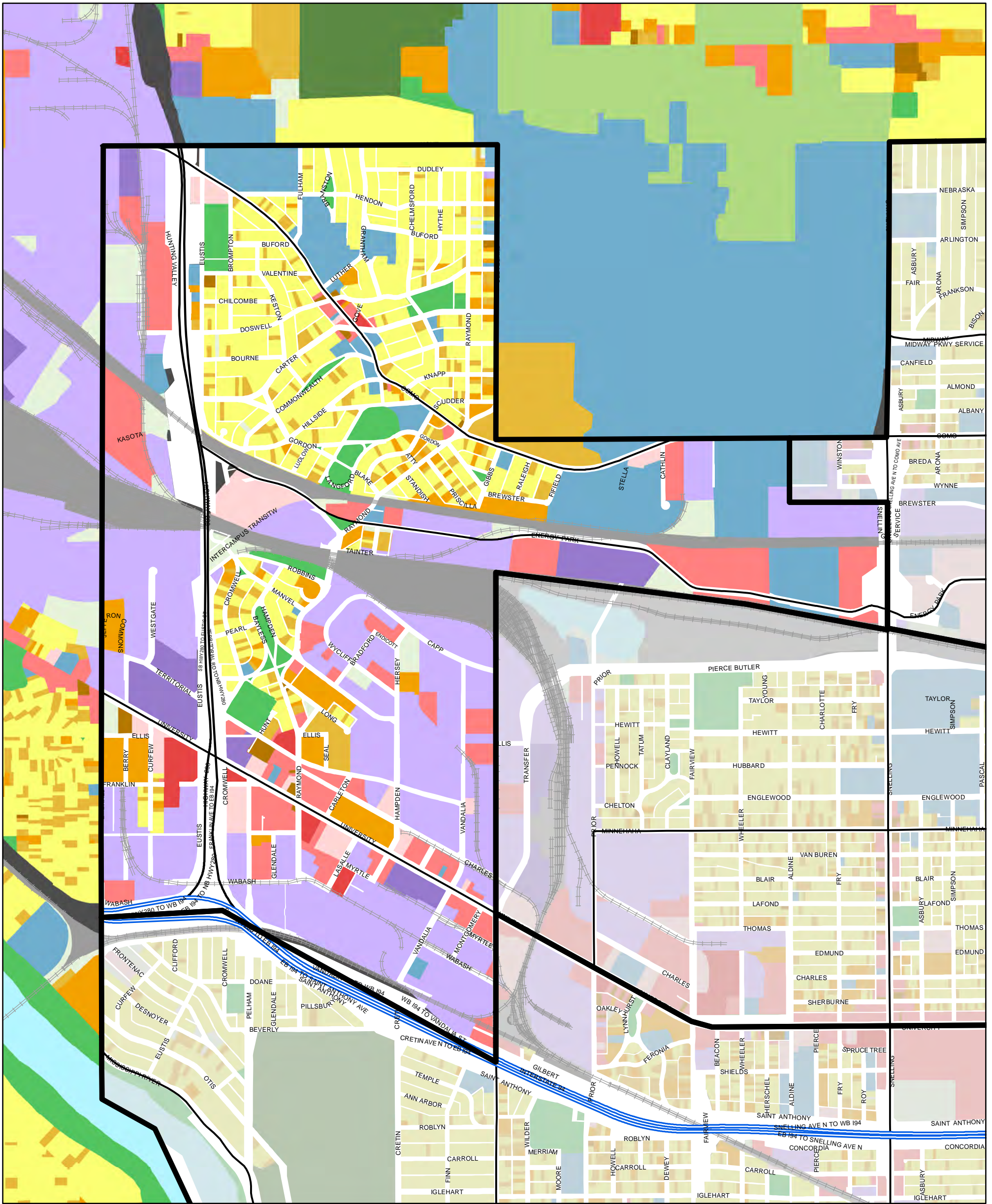
SAINT PAUL LAND USE BY PLANNING DISTRICT (2010)

Hamline-Midway



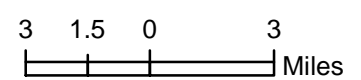
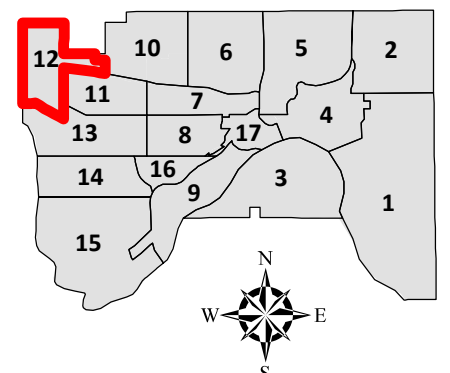
LAST UPDATED: 12/18/2013





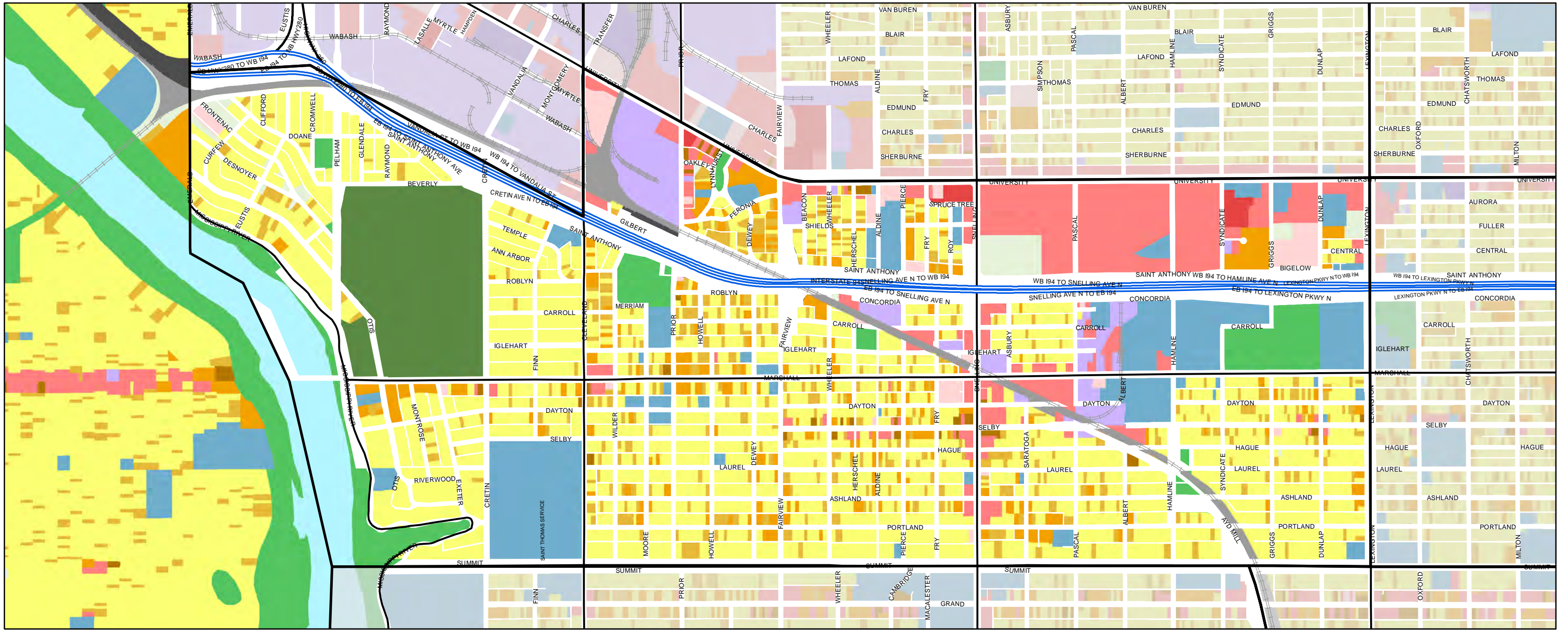
SAINT PAUL LAND USE BY PLANNING DISTRICT (2010)

St Anthony Park



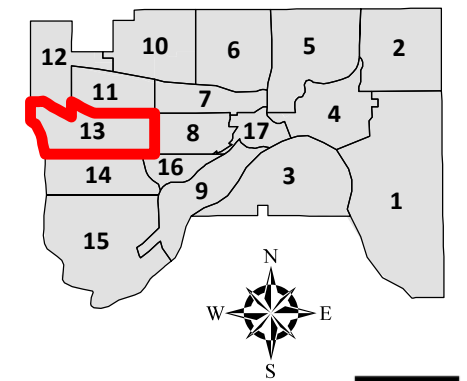
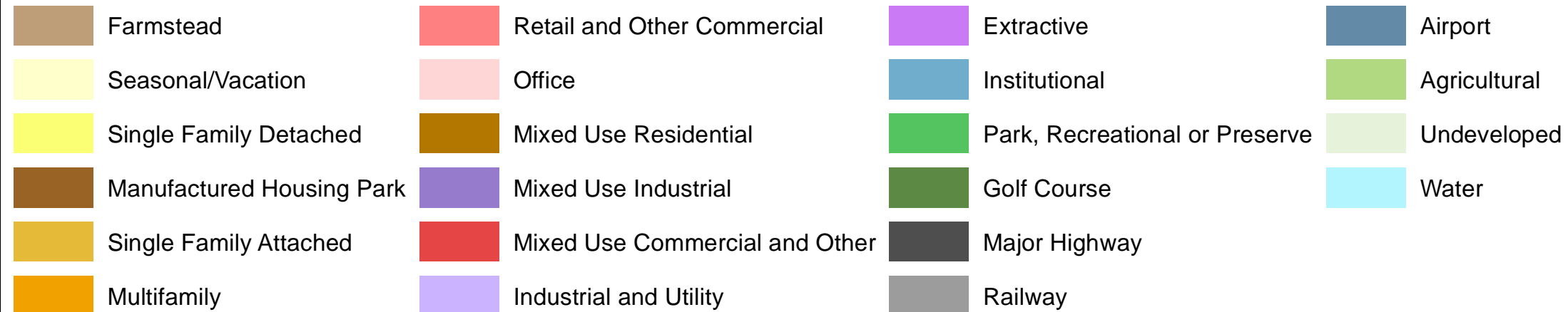
LAST UPDATED: 12/18/2013





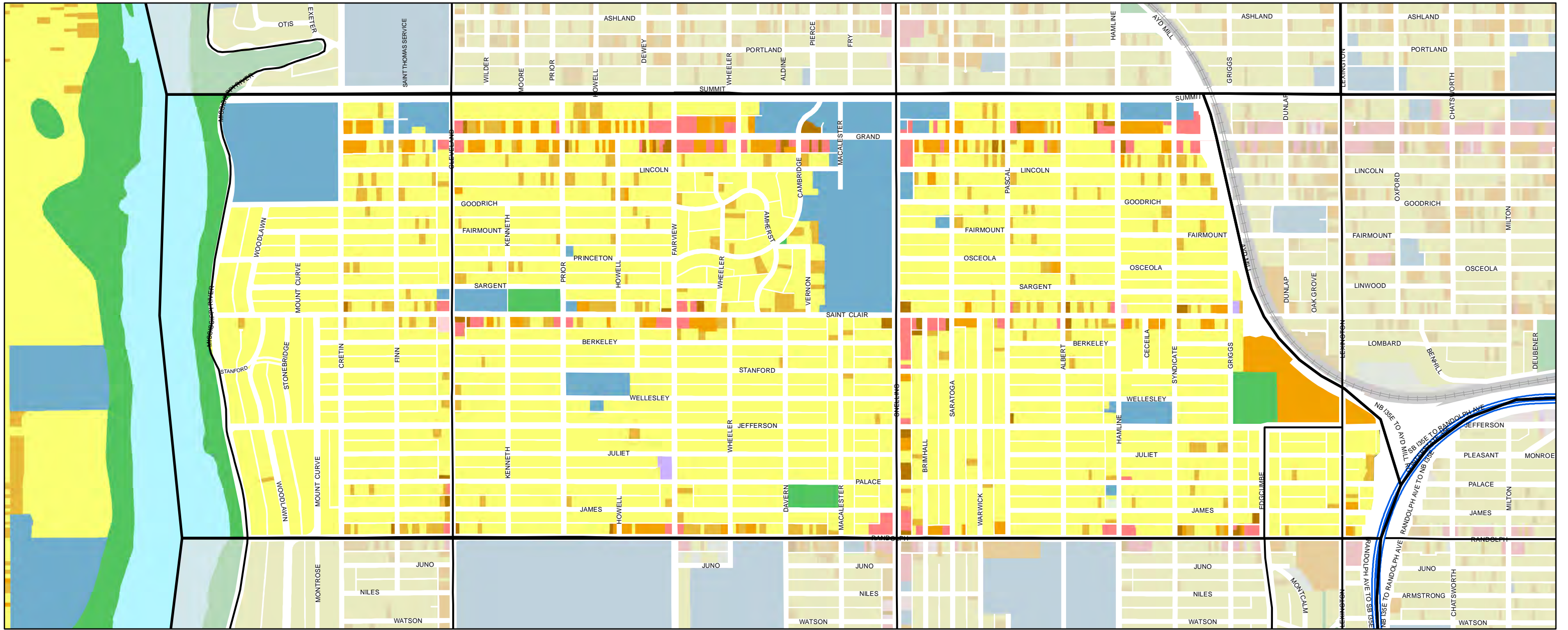
SAINT PAUL LAND USE BY PLANNING DISTRICT (2010)

Union Park



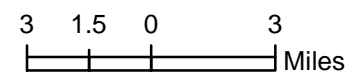
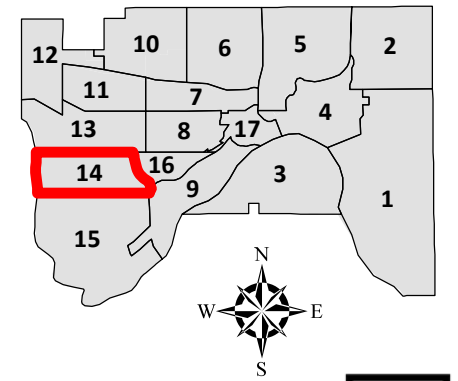
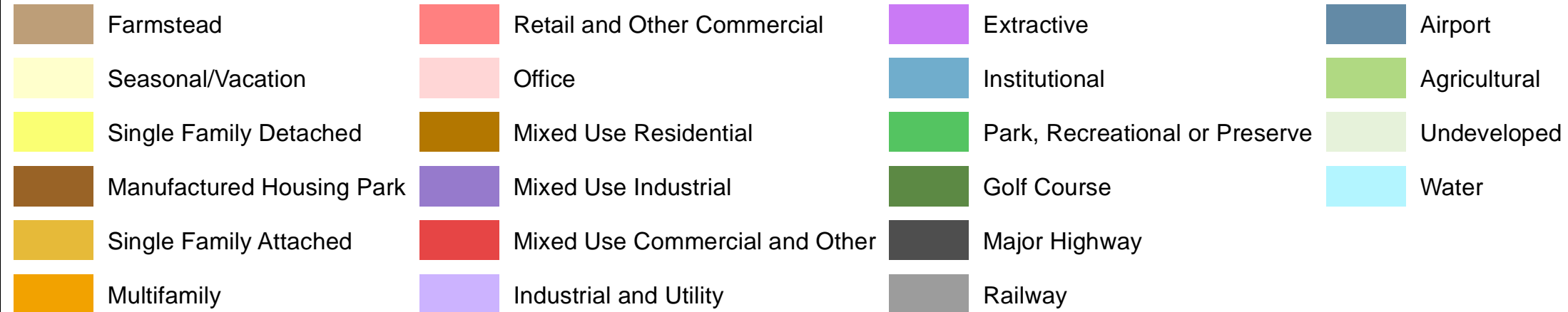
LAST UPDATED: 12/18/2013





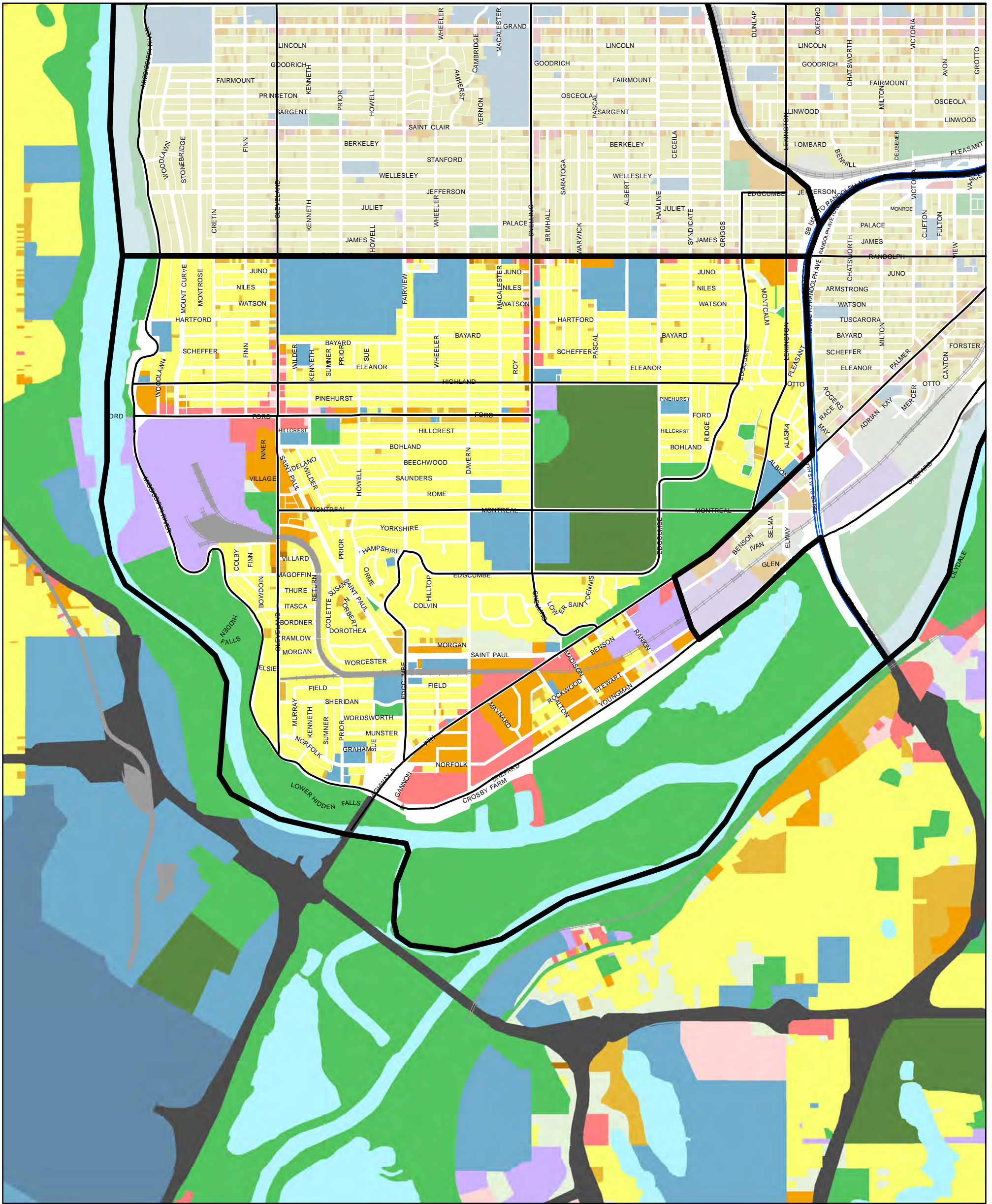
SAINT PAUL LAND USE BY PLANNING DISTRICT (2010)

Macalester-Groveland



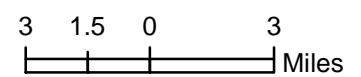
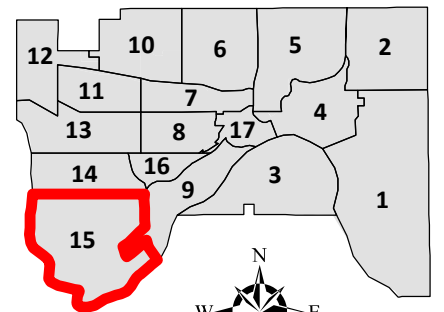
LAST UPDATED: 12/18/2013





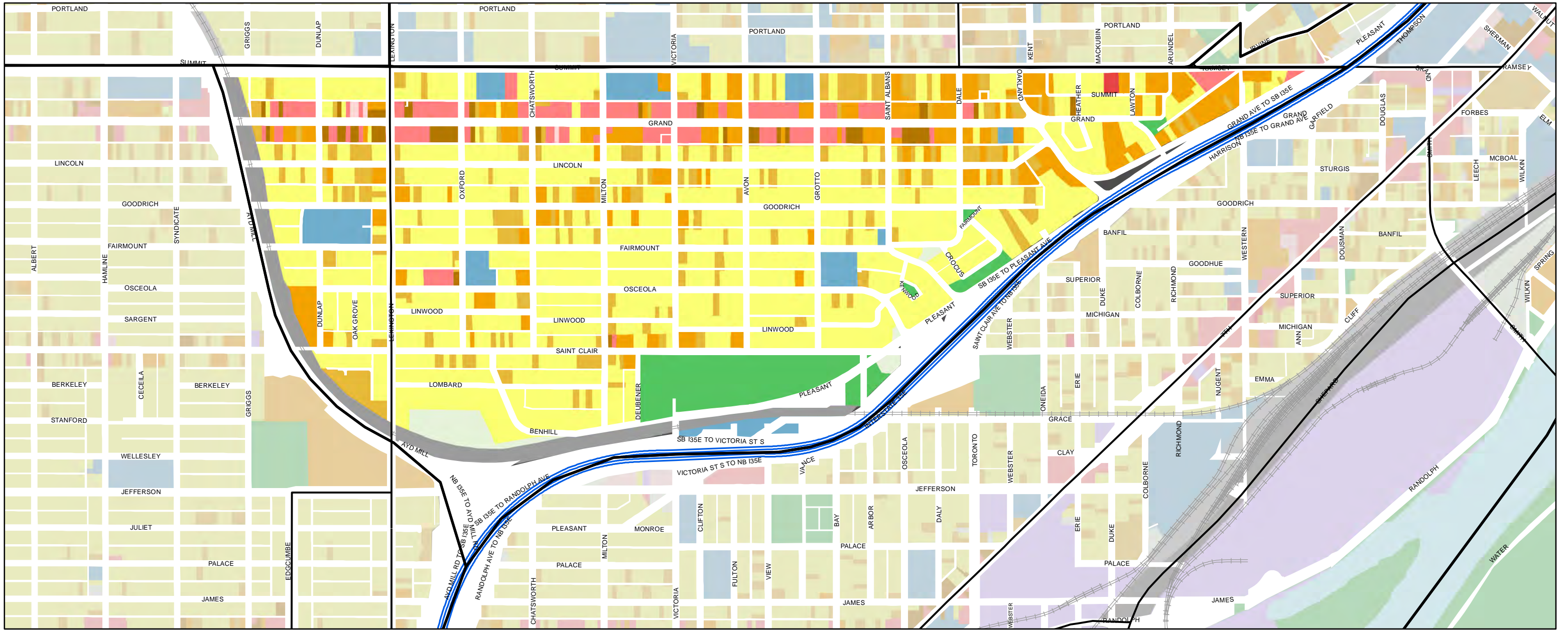
SAINT PAUL LAND USE BY PLANNING DISTRICT (2010)

Highland Park



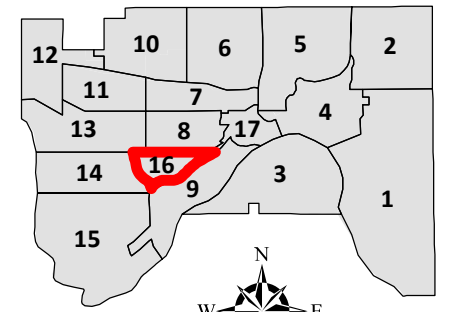
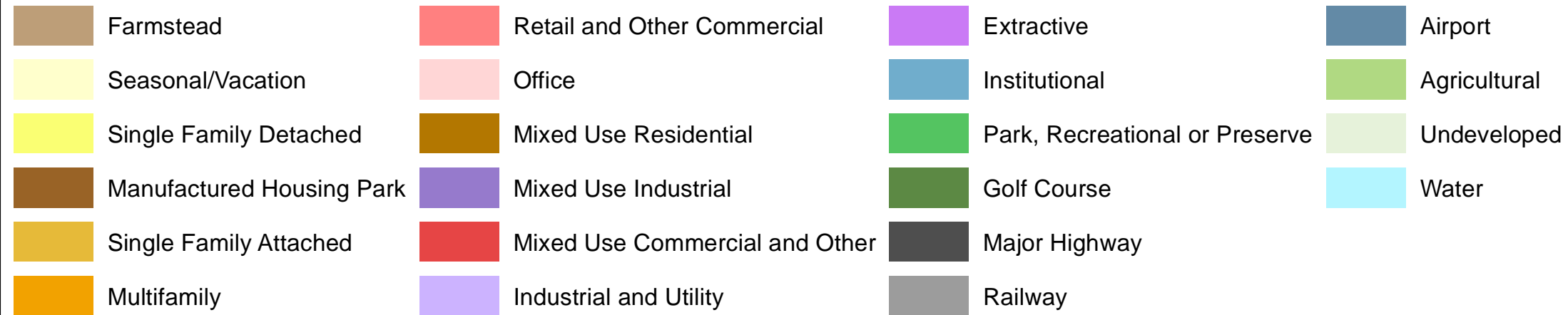
LAST UPDATED: 12/18/2013





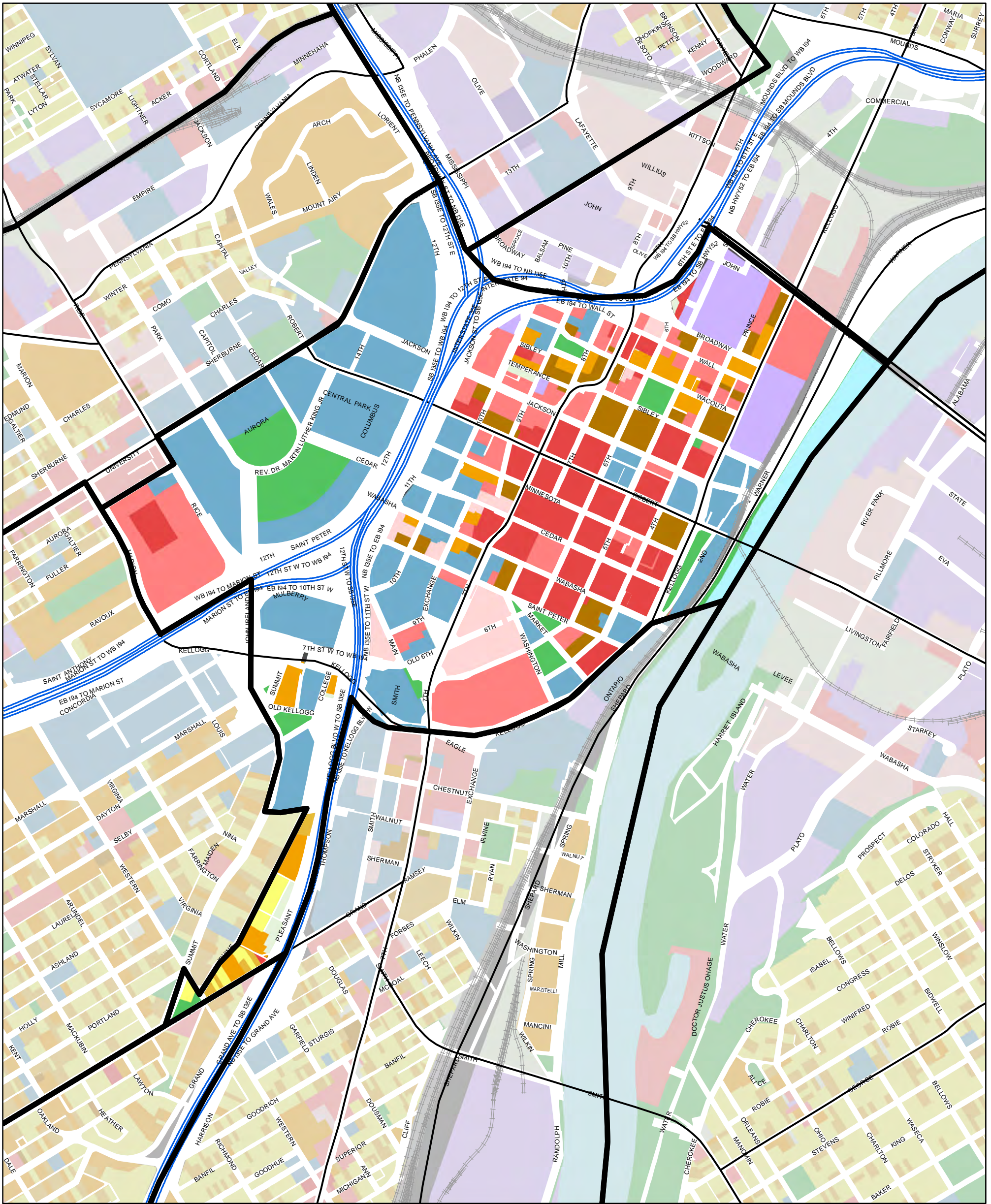
SAINT PAUL LAND USE BY PLANNING DISTRICT (2010)

Summit Hill Association



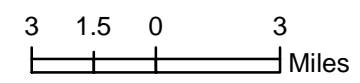
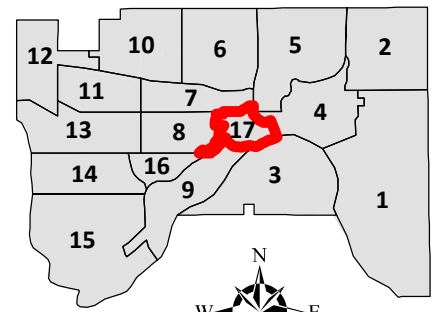
LAST UPDATED: 12/18/2013





SAINT PAUL LAND USE BY PLANNING DISTRICT (2010)

CapitolRiver Council



LAST UPDATED: 12/18/2013

The Most Livable City in America